



Type A: anti-falling design on the back (for patch panel)



Type B: cable bending protection design on the back (for faceplate)



Type C: without protection design on the back (for the application if the space is small or the cable bending direction is uncertain, like ground socket)

COMPLIANCE

- ANSI/TIA 568.2-D Category 6A
- ISO/IEC 11801 Class Ea

FEATURES & BENEFITS

- Meet and exceed Category 6A component and channel performance
- Optional back designs for different applications
- Fast and toolless termination
- 360° fully shielded design to effectively prevents EMI
- Outstanding electrical performance
- Reliable grounding
- No cable tie required

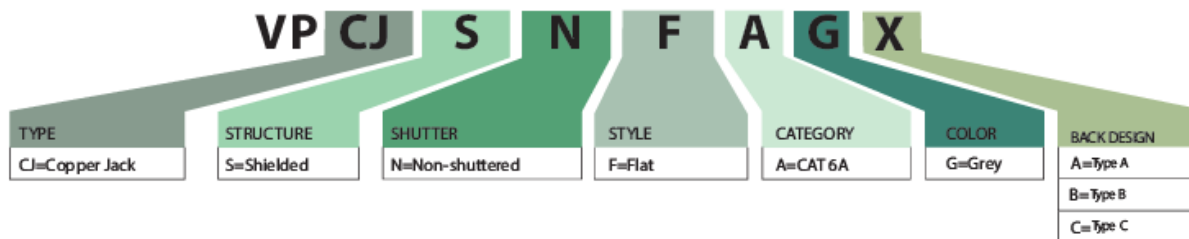
PHYSICAL CHARACTERISTICS

IDC	Phosphor bronze
RJ45 Pin	Phosphor bronze with 50microinch gold plating
Plug Insertion	≥1000 times
IDC Insertion Life Span	≥250 times
AWG	22~26AWG
Wiring	T568A/T568B

ELECTRICAL CHARACTERISTICS

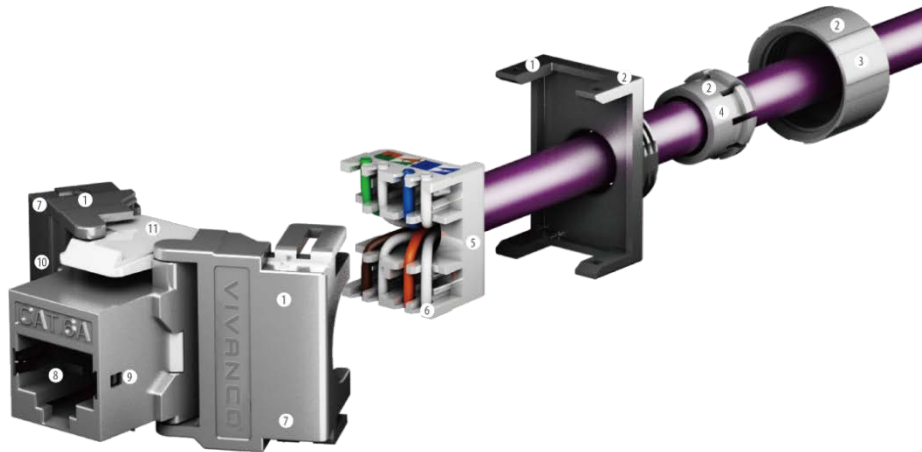
Dielectric Strength	DC 1000V(AC750V) 1min, no breakdown and arcing phenomena
DC Resistance	≤300mΩ
Connecting Resistance	≤20mΩ
Insulation Resistance	Under normal atmospheric pressure ≥500mΩ

NAME CODING



ORDERING INFORMATION

Part No.	Description
VPCJSNFAGA	Petram Series, CAT 6A Shielded Keystone Jack, Type A for Patch Panel
VPCJSNFAGB	Petram Series, CAT 6A Shielded Keystone Jack, Type B for Face Plate
VPCJSNFAGC	Petram Series, CAT 6A Shielded Keystone Jack, Type C for Ground Socket



Type A

- 1. 360° fully shielded
- 2. Anti-disengaging design
- 3. Application cable diameter 6-8mm
- 4. IP20
- 5. Fast wiring
- 6. Anti-falling Design
- 7. Toolless design
- 8. Meet and exceed ISO/IEC and IEEE802.2 standard
- 9. Grounding with connector
- 10. Automatic grounding
- 11. Short circuit protection for grounding wire



Type B

- 1. 360° fully shielded
- 2. Shielded 90° cable outlet
- 3. Two 90° outlet directions by rotation
- 4. Cable-bending protection design on the back



Type C

- 1. 360° free outlet